

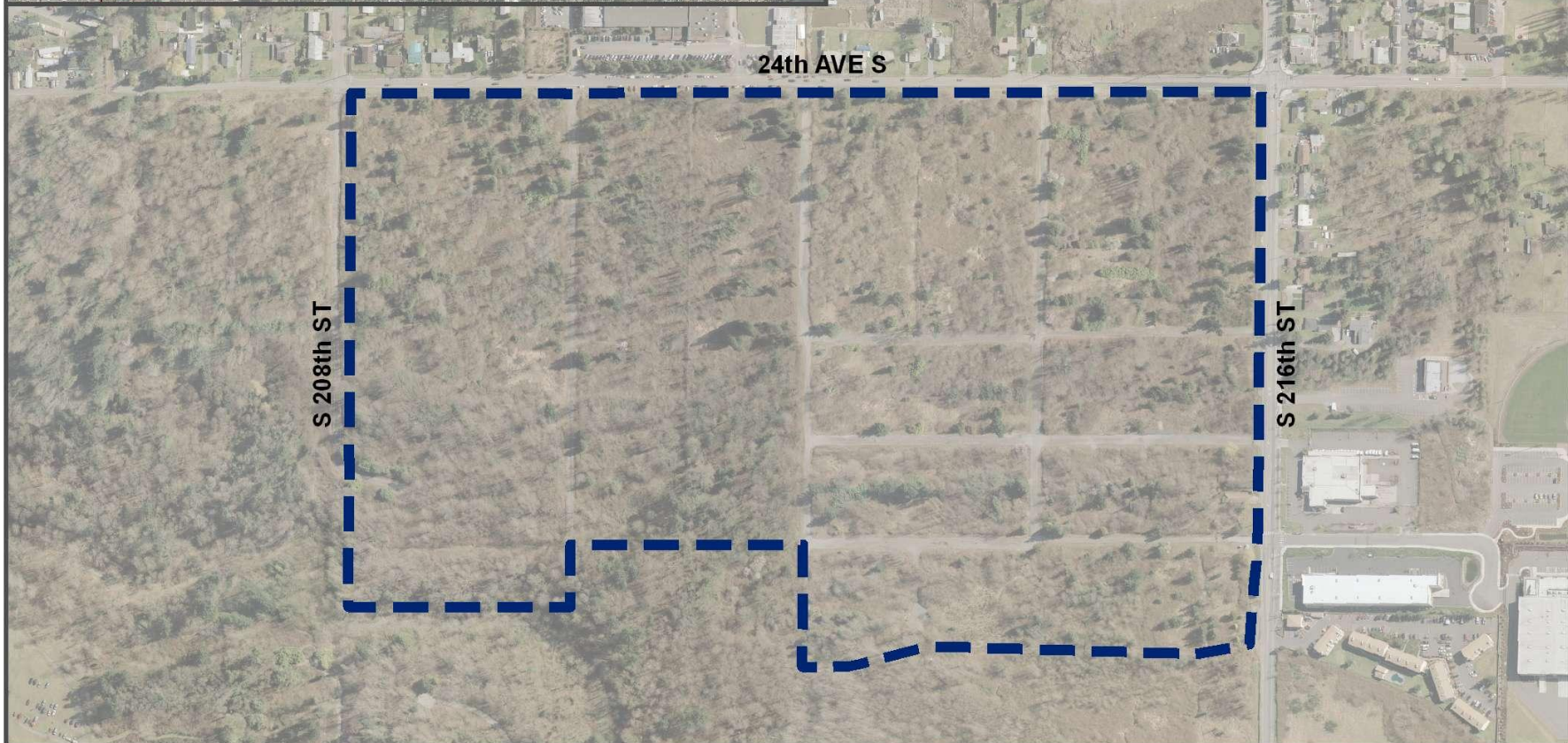
Item No: 6d Supp

Date of Meeting: 11/2/10

Des Moines Creek Business Park

Street Acquisition & Right-of-Way Sale

November 2, 2010

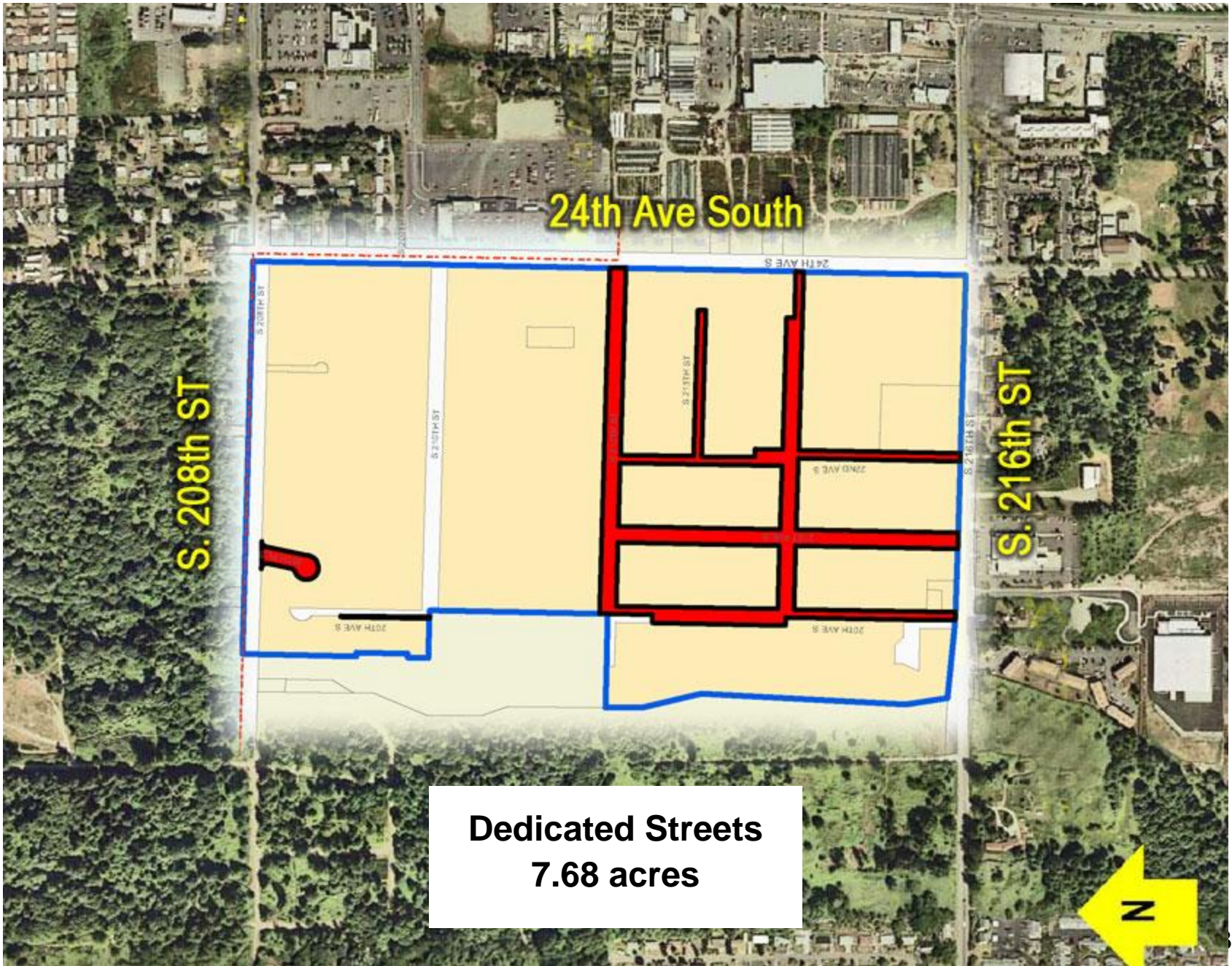


Des Moines Creek Business Park

Exhibit 1
Site Map

300 150 0 300 Feet





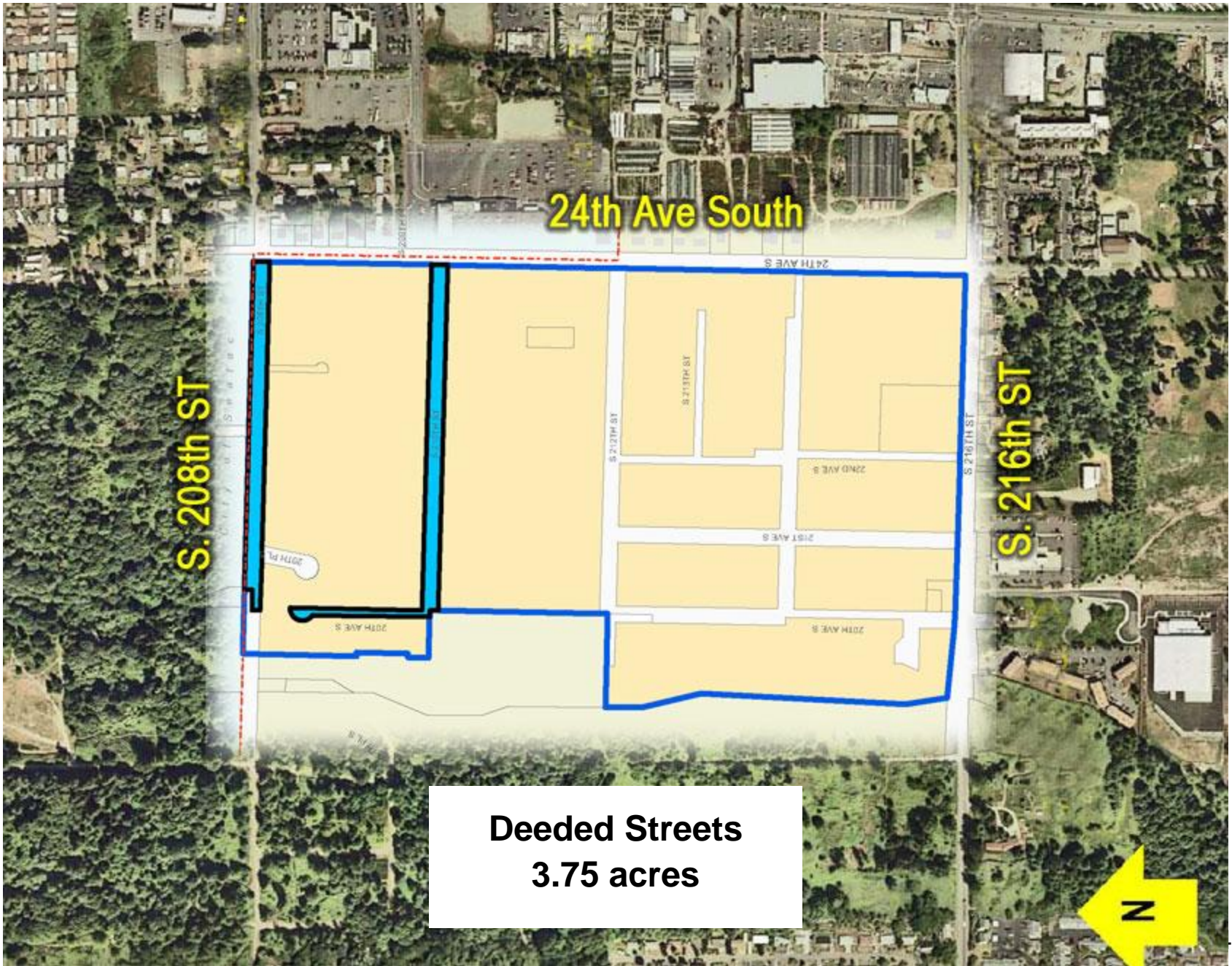
24th Ave South

S. 208th St

S. 216th St

Dedicated Streets
7.68 acres

N



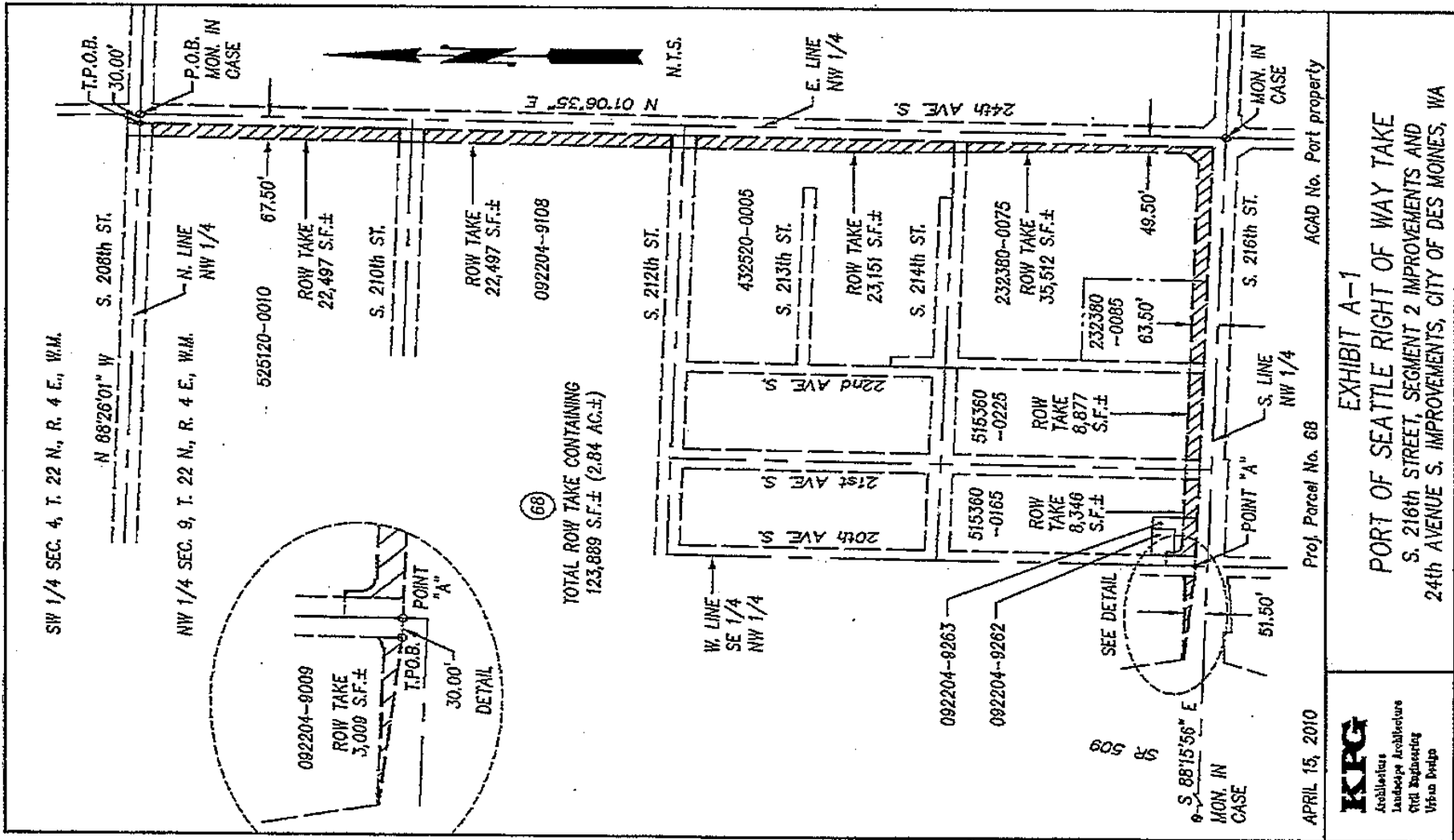
24th Ave South

S. 208th ST

S. 216th ST

Deeded Streets
3.75 acres





(68)

TOTAL ROW TAKE CONTAINING
123,889 S.F.± (2.84 AC.±)

APRIL 15, 2010

Prof. Parcel No. 68

ACAD No. Port property

KPG
Architects
Landscape Architecture
Civil Engineering
Urban Design

EXHIBIT A-1

PORT OF SEATTLE RIGHT OF WAY TAKE
S. 216th STREET, SEGMENT 2 IMPROVEMENTS AND
24th AVENUE S. IMPROVEMENTS, CITY OF DES MOINES, WA

Right of Way Sale
2.84 acres

Key Terms

- Appraised Value
- Purchase/Sale Amount
- Closing
- Second Development Agreement

Requested Action

- Acquire all abandoned streets from City of Des Moines and WSDOT
- First reading of resolution on sale to the City
- Total authorization not to exceed \$3,200,000